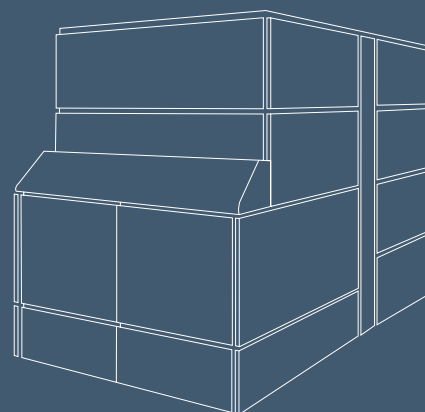


PlateDriver Flexible and productive CtP



ESKO | graphics[®]
EXPECT MORE

PlateDriver Flexible and productive CtP

Reliable productivity



Productivity, flexibility and reliability are the fundamental elements of modern CtP production. Prioritizing these as key strategy principles we developed the PlateDriver – a high quality and dedicated CtP system which is capable of growing with your production needs. Our vast experience in research, development and the production of CtP equipment enabled us to create this essential CtP system. The PlateDriver is a cost-effective system that will improve your business performance, it requires minimal manual labor and the optimized ease-of-use enables the system to be ready for 24-hours unattended production from day one.

Totally dedicated to CtP, the PlateDriver is part of the Esko-Graphics GO CtP strategy that, alongside the PlateDriver, consists of the following elements: Unique CopyDot solution The EskoScan scanner is a vital component of CtP production where you still have to deal with non-electronic originals. Esko-Graphics' unique CopyDot technology ensures that pre-screened prints

or film are easily digitized into bitmap files, which can be integrated into your digital workflow. Furthermore, the scanner may be upgraded to scan CT B/W and CT color as well.

– a flexible approach



Superior workflow system

The FlowDrive workflow system is designed for plate production. FlowDrive addresses the workflow issues of an increasingly demanding and time-critical pre-press production process with new simplicity. Whether your production is PDF or PostScript-based, FlowDrive provides predictable workflow for accurate and efficient output of fully imposed press-ready plates on the PlateDriver.

Added value service concept

Without good service even the best equipment in the world may not be good enough. That's why at Esko-Graphics, we have invested a great deal of time and thought into developing the service solutions that you need. At a cost-effective price we cover all your needs and ensure trouble-free operation.

Productivity

The PlateDriver has been designed and optimized in order to ensure the highest level of productivity. However to us, productivity is more than just a matter of how many plates your exposure unit can produce in an hour or the technical specifications of the equipment. Productivity is also a question of high quality products with no failure rates, ease-of-use, the ability to let the PlateDriver run unattended overnight, easy media load and calibration. The PlateDriver is designed in such a way that it reduces both manual handling and make-ready time in the pressroom.



Flexibility

At Esko-Graphics we never forget your individuality; all PlateDrivers are tailored according to your needs. The flexible approach enables you to choose a configuration that suits your current production needs – allowing you to add new features if and when your needs change in the future.

There are several options where you can choose between various laser types for exposing different CtP plates. There are unlimited possibilities for installing register systems and you can choose whether to have your PlateDriver with a 4-up exposure format (680 x 788 mm / 24.4 x 31") or 8-up exposure format 800 x 1075 mm (31.5 x 42.3"). All option changes can take place in the field with very little system downtime.

PlateDriver flexibility

The PlateDriver flexibility ensures that the CtP system matches every production need. Moreover, it is a future-safe investment as all options are upgradable in the field.

Reliability

The advanced electronic architecture of the PlateDriver ensures an extremely high level of reliability. We have used our vast CtP experience to develop a CtP exposure unit that is optimized in every process – any sources of errors are eliminated and loading accuracy is optimized.

PlateDriver 8 with automatic plate handling



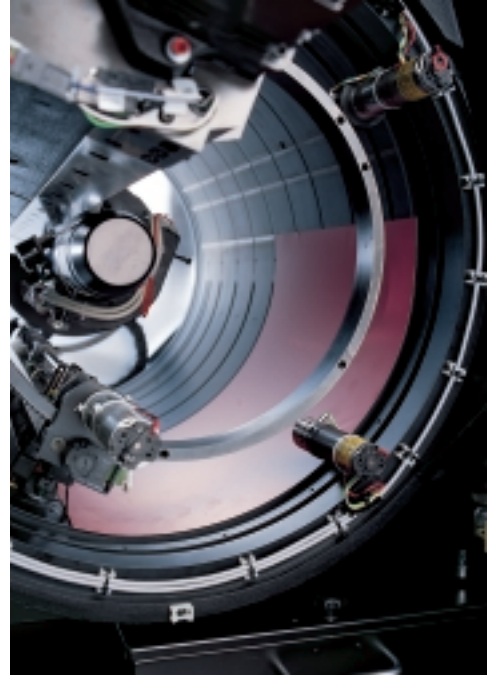
PlateDriver 8 with semi-automatic plate handling

Plate technology

You can choose among various laser technologies for exposing different types of CtP plates.

The PlateDriver supports the widest variety of lasers in the market. With the PlateDriver, you are not tied to a particular type of plate, as you can upgrade your laser at anytime, in the field. The PlateDriver supports the following printing plates:

- Silver halide plates – exposed by
Violet diode laser (405 nm)
Argon Ion laser (488 nm)
- Photo-polymer plates – exposed by
FD Nd YAG laser (532 nm)
Violet diode laser (30 mW)
- Thermal plates – exposed by
Thermal Fiber laser (1064 nm)



The laser unit is mounted at the bottom of the PlateDriver cabinet and can be easily refitted in the field.

MultiPunch system

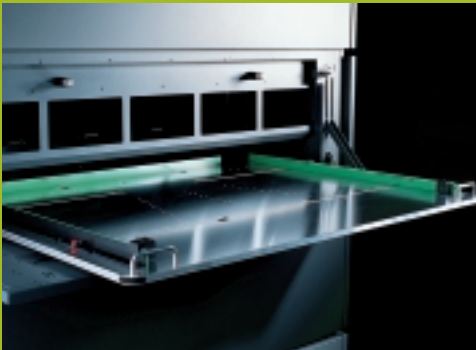
The Esko-Graphics MultiPunch system is extremely flexible as it supports most standard register systems in the market as well as specific customer needs. This is possible due to variable positioning of the plate in the drum and the possibility of placing punch units at head and/or tail. It is actually possible to have five plate formats, all with different punch systems, online at a time without any manual operation. The register holes in the plates are punched automatically as an integrated part of the workflow. This is carried out before exposure, and the punch unit remains closed throughout the entire exposure process.

OptoLink

The patented Esko-Graphics OptoLink principle delivers significantly enhanced dot sharpness, featuring complete separation of laser and carriage, with a fiber optic cable transmitting the light directly and without interference.

Level of automation

Esko-Graphics recognizes that not all printers need the same level of automation. The PlateDriver is therefore designed to make it possible to choose the configuration that is appropriate to your pressen demands with either automatic or semi-automatic plate loading.



The loader system of the automatic version can achieve an online capacity of 500 plates. The PlateLoader itself comprises five plate trays, each of which has a capacity of up to 100 plates. Hence you get the opportunity to work with five different plate sizes online, and if more than one of the plate trays are loaded with the same format of plate, Esko-Graphics Commander automatically switches to a new plate tray as soon as one is empty.



The protection paper between the plates is automatically removed as part of the loading process. The paper is removed by an air stream and falls down into a waste bin, which is easily emptied.



Esko Commander

The Esko-Graphics Commander software is the PlateDrivers integrated easy-to-use control system. The PlateDriver is divided into more than 20 sub-systems built up around high quality motors and precision sensors to ensure maximum reliability. The Esko-Graphics Commander makes it possible to maintain full control of all PlateDriver functions in a simple and versatile manner. Moreover, the program constantly monitors the entire output system by continuously gathering and storing data concerning the important characteristics of all the components.

Workflow integration

The PlateDriver has an open architecture. It can be integrated with Esko-Graphics workflow systems as well as any other system in the market, e.g. users can choose to continue working with their existing workflow solution if required.

The PlateDriver enables you to gain access to the main operating facilities inside the exposure unit through easy to open panels.



www.esko-graphics.com

HEAD OFFICES:

ESKO-GRAPHICS NV

Tramstraat 69
9052 Gent
Belgium
Tel.: +32 9 216 92 11
Fax: +32 9 216 94 64
info.be@esko-graphics.com

ESKO-GRAPHICS PTE LTD

Block 750C Chai Chee Road
#01-07/08 Technopark @ Chai Chee
Singapore 469003
Rep. of Singapore
Tel.: +65 6241 21 26
Fax: +65 6446 20 90
info.asia@esko-graphics.com

ESKO-GRAPHICS INC

721 Crossroads Court
Vandalia, Ohio 45377
USA
Tel.: +1 937 454 17 21
Fax: +1 937 454 15 22
info.usa1@esko-graphics.com

ESKO-GRAPHICS CO. LTD

Y-M Shinjuku Bldg. 5F
4-1 Yotsuya 4-Chrome, Shinjuku-ku
Tokyo, Japan 160-0004
Tel.: +81 3 5363 0972
Fax: +81 3 5363 0974
info.japan.bg@esko-graphics.com

ESKO-GRAPHICS INC

500 Townpark Lane, Suite 250
Kennesaw, Georgia 30144
USA
Tel.: +1 770 427 57 00
Fax: +1 770 427 78 44
info.usa2@esko-graphics.com

Esko-Graphics – two strong heritages Barco Graphics and Purup•Eskofot

ESKO | **graphics**⁺
EXPECT MORE